

IMPORTANT

**CONTAINS SEALED LEAD BATTERY
BATTERY MUST BE RECYCLED**

THIS APPLIANCE CONTAINS A RECHARGEABLE SEALED LEAD ACID BATTERY AND MUST NOT BE DISPOSED OF IN LAND FILL.

BATTERY REMOVAL & DISPOSAL INSTRUCTIONS:

1. TURN OFF THE MAINS SUPPLY POWER TO THE RECHARGER
2. DISCONNECT THE RECHARGER FROM THE APPLIANCE
3. TURN OFF POWER TO THE APPLIANCE BY PUSHING ON / OFF SWITCH TO OFF POSITION
4. REMOVE THE 6 SCREWS FROM THE REAR SECTION OF THE APPLIANCE TO EXPOSE THE BATTERY
5. CUT WIRES CONNECTED TO THE BATTERY
6. REMOVE BATTERY FROM APPLIANCE
7. CONTACT YOU LOCAL COUNCIL OR CONSULT THE YELLOW PAGE DIRECTORY FOR SCRAP METAL MERCHANTS OF RECYCLING SPECIALISTS AS THE BATTERY CONTAINED IN THIS APPLIANCE IS RECYCLABLE

Copyright © The material used for the production of this owners manual including text, graphics and layout are owned by The Kelly Company Pty Ltd and protected by copyright under the laws of Australia

Trade Mark ™ This product and packaging includes registered trade marks and trade marks which are the subject of pending applications by The Kelly Company Pty Ltd and are protected by trade mark laws of Australia

OWNERS MANUAL



BUG ZAPPER

..cordless, rechargeable battery operated...



the KELLY COMPANY

20 Tucks Road Seven Hills Sydney
NSW 2147 Australia



MODEL SB 980

THIS PRODUCT IS NOT SUITABLE FOR PERMANENT OUTDOOR INSTALLATION

DO NOT ATTEMPT TO OPERATE THE LANTERN GUARD DIRECTLY FROM RECHARGER

Heed Warnings: All warnings on the appliance and in the operating instructions should be adhered to.

Water & Moisture: The appliance should not be used near water, for example over pond, bath tubs, kitchen sinks or above a swimming pool.

Do Not Modify: Do not modify, paint or change the unit in any way.

Young Children / Infirm Persons: This appliance is not intended for use by young children or infirm persons unless they have been adequately supervised by a responsible person to ensure that they can use the appliance safely.

Young Children: Young children should be supervised to ensure they do not play with the appliance.

Heat: The appliance should be situated away from heat sources such as radiators, stoves and other appliances that produce heat.

Power Source: The appliance should be powered only as described in these instructions or as marked on the appliance.

Cleaning: The appliance should be cleaned only as recommended in these instructions and in accordance with the water and moisture warning stated in this manual

Liquid Entry: Do not submerge the main body of the Lantern Guard in water (tray excepted)

Object Entry: Do not place any object through any of the openings in the Lantern Guard

Extension Cord: If required carry out a physical safety check of extension cord before use. Check for cuts or damage, kinks / twisting, exposed wires, damaged plugs (bent or loose pins). Avoid improper use of extension cords and keep them away from moisture.

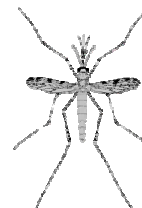
Damage Requiring Service: The appliance should be serviced by a qualified Service Technician when:

- I. Lantern Guard has been dropped or the body has been damaged
- II. The Lantern Guard does not appear to operate normally or exhibits a marked change in performance
- III. Supply cord to the recharger is damaged

Service: The user should not attempt to service the appliance beyond that described in these operating instructions. All other servicing should be referred to a qualified Service Technician. User should not attempt to open the back panel of the Lantern Guard as there are no user serviceable parts and any attempt to do so will void the warranty.

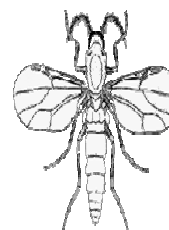
Owner's Manual

MOSQUITOES:



Mosquitoes are blood sucking insects that are responsible for the transmission of many diseases. Within Australia there are more than 300 different species of mosquito. Several important human diseases are transmitted by these insects including Dengue fever, Australian encephalitis, Ross River virus disease and Barmah Forest virus disease. Mosquitoes also cause lifestyle problems, through their persistent biting spoiling recreational and social activities.

BITING MIDGES (SANDFLIES):



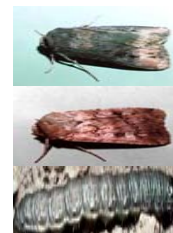
Biting midges or sandflies as they are called in Australia are small robust insects with piercing and sucking mouthparts. These small flies are renowned for their nuisance biting in coastal areas around lagoons, estuaries, mangrove swamps and tidal flats. The biting activity of adult is mainly limited to the periods of dawn and dusk; they will remain inactive through very windy weather. Female midges may attack humans in large numbers, biting on any areas of exposed skin, and often on the face, scalp and hands.

NON BITING FLIES:



Non-biting flies are often associated with domestic dwellings, especially throughout the warmer months when they breed prolifically, invading homes. Non-biting Australian flies contain many species that are responsible for contamination and spoilage of foodstuffs, annoyance, mechanical transmission of disease-causing pathogens, and invasion of living tissues (myiasis). Collectively known as "filth flies", they are distributed throughout the families of Calliphoridae (blow flies), Sarcophagidae (flesh flies) and Muscidae (house flies).

CODDLING MOTHS:



In Australia, there are over 10,000 species of moths. Most of the **Caterpillars** are the larvae of moths. The caterpillars feed at night and chew plants off at ground level. During the day, the caterpillars hide under clods of dirt or litter on the soil. **Army Worm** is a grass eating caterpillar that moves through the lawn like a raiding army and can reduce grass leaves to tattered shreds almost overnight. **Cutworms** are caterpillar pests that cause damage to crops and are a major problem for agricultural and horticultural industries of Australia



MODEL SB 980

WARRANTY:

Congratulations on purchasing the Lantern Guard® Bug Zapper. To ensure that you achieve the maximum life and performance from this quality appliance from The Kelly Company please read the following warranty information and complete the purchase date and retailer / supplier information as this will be needed when making a warranty claim.

Warranty: The Kelly Company Pty Ltd warrants your Lantern Guard Bug Zapper to be free from defects in materials and workmanship under normal use and service conditions for a period of 12 months from the date of original purchase. Subject to this warranty defective units or parts will, at the company's discretion, be repaired or replaced free of charge excluding freight or postage to and from The Kelly Company Pty Ltd which will be paid for by the purchaser.

The provision of this warranty shall not apply to any Lantern Guard which has been subject to abuse and misuse, neglect or accident. Nor does the warranty apply to any Lantern Guards that have within the warranty period been used for a purpose for which the product has not been designed or which has been repaired or altered in such a way so as to adversely affect its performance and reliability. Service by an unauthorized source voids the warranty.

The Kelly Company Pty Ltd neither assumes nor authorizes any person to assume for it any other liability in connection with this product. No responsibility is assumed for any consequential damage that may result from the use of the Lantern Guard nor for damages due to accident, abuse, lack of responsible care, the fixing of any unauthorized attachment, loss of part or subjecting the product to any other but the specified voltage.

Purchase Record: Immediately complete the following Proof of Purchase information and retain your cash register and credit card receipt as proof of purchase as this will be required when claiming under this warranty.

Date of Purchase:

Retailer / Supplier Name & Address:

.....

Service:

Contact Customer Service at The Kelly Company Pty Ltd 20 Tucks Road Seven Hills Sydney NSW 2147 Australia on 02 8811 3716 between 9.00 am and 5.00 pm EST

Lantern Guard Replacement Black Light Ultraviolet Lamp is Cat No 71462

Owner's Manual

WELCOME:

Thank you for purchasing the **Lantern Guard** Model SB 980 Portable Bug Zapper.

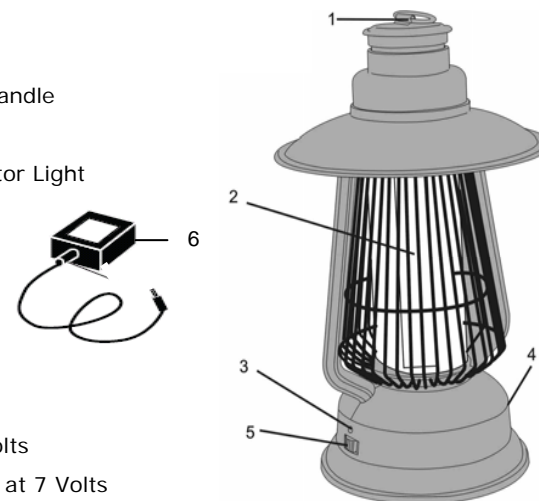
This manual will provide you with directions for the safe and efficient operation of your Lantern Guard. Please read this manual carefully and keep it for future use.

The Lantern Guard lures insects with its ultraviolet light emission and cleanly and effectively terminates them upon contact.

Failure to operate the Lantern Guard in accordance with the instructions in this manual may cause damage to the unit and void the warranty.

Location of Controls:

1. Hanging Hook / Carry Handle
2. Long Wave UV Light
3. Operating Status Indicator Light
4. Charging Port
5. Power ON/OFF Switch
6. Battery Recharger



Specification:

Ultraviolet Light	6 Watts
Killing Grid	2200 Volts
Recharger	800 mA at 7 Volts

Charging Lantern Guard

Although the Lantern Guard may come partially charged from the factory it is strongly recommended that you fully charge the battery before use. To charge the battery use the 7 volt AC DC Recharger which is included with the Lantern Guard

1. Turn the ON/OFF switch to the OFF position
2. The Indicator Light will NOT illuminate therefore it is recommended that you monitor the time the unit is charging. For best results charge for 5-6 hours.
3. To check battery charge turn the ON/OFF switch to ON position and the indicator light will illuminate signalling battery charge status. **Important:** Do NOT attempt to charge the Lantern Guard in this mode.

Red Light = Low Battery | **Green Light = Charged Battery**



MODEL SB 980

Using the AC-DC 7V Recharger:

Plug one end of the 7 V AC-DC Recharger into the Charging Port of the Lantern Guard. Plug the other end into any standard 240-volt wall outlet. To fully charge the battery leave the Recharger plugged in and on for approximately 5-6 hours. (Refer to the instructions on previous page for recharging the Lantern Guard)

Operation:

The Ultraviolet Light in the Lantern Guard attracts flying insects and the electrified grid kills them.

Being completely portable you can place the Lantern Guard on a flat level surface such as a table top or use the Hanging Hook / Carry Handle to hang it where convenient. Turn the unit ON by sliding the Power ON/OFF Switch to the ON (right) position and the LED Indicator will illuminate green. If the LED Indicator illuminates orange/red, then the battery needs to be recharged (see above and previous page).

Indoor Use:

Place the unit indoors to help get rid of any flying insects that have found their way inside the house or the area you wish to protect.

Outdoor Use:

Lantern Guard is not intended for permanent outdoor installation and use. **If it is taken outdoors it must be used in covered areas only and must not be exposed to rain, water or any moisture.**

Dead Bug Removal:

First make sure the unit is turned OFF. Simply turn the Lantern Guard on its side to dislodge collected dead bugs from the base of the Lantern Guard and empty them onto the garden or into a garbage receptacle.

Killing Grid Cleaning:

Cleaning of the Killing Grid will extend product life and promote more efficient operation. First make sure the unit is turned OFF. Remove dead insects that may have lodged in the killing grid with a fine soft brush or blowing equipment. Be careful not to damage the grid.

WARNINGS:

Do not expose Lantern Guard to moisture.

Do not use Lantern Guard outdoors when raining

Do not touch the killing grid while the unit is switched ON

Turn Lantern Guard OFF when charging.

Do not modify Lantern Guard or its Recharger in anyway

Owner's Manual

Service:

Do not attempt to open the **Lantern Guard®** Model SB 980. There are no consumer serviceable parts in this product and doing so will void the warranty.

The user must not attempt to service the unit beyond what is described in this Manual in the Killing Grid Cleaning section. All other servicing including replacement of the lamp should be referred to a qualified service person or returned to The Kelly Company Pty Ltd at the address shown on the back page of this Manual.

Your Lantern Guard® Portable Bug Killer including the Lamp is warranted for a period of 12 months from date of purchase. Refer to the Warranty on the back page of this Manual and record your proof of purchase information.

The return freight / postage costs for the return of the Lantern Guard® Bug Zapper to The Kelly Company, during or outside of the warranty period, is to be paid by the purchaser. Goods being returned are to be prepaid by the purchaser and a non negotiable cheque or money order to the value of \$6.00 made out to The Kelly Company Pty Ltd is to be included with the returned goods for the return freight. Ensure that the Lantern Guard Bug Zapper is well packed to avoid transport damage, as such damage is not covered under the Warranty. Also include written details of the product failure.

Trouble Shooting:

Problem	Possible Reason (s)	Correction
Lantern Guard! Lamp does not light	The internal battery needs to be recharged	Refer to sections <i>Charging Lantern Guard & Using AC-DC 7V Recharger</i>
Lantern Guard is not zapping	The internal battery needs to be recharged	Refer to sections <i>Charging Lantern Guard & Using AC-DC 7V Recharger</i>
Lantern Guard is fully charged but is still not zapping.	The power to the killing grid may have failed	Holding the handle of an insulated (plastic handled) screwdriver place the tip onto the wire killing grid when the unit is turned on. If there is no zap call our Customer Service Department in Sydney on 02 8811 3716
Lantern Guard Lamp does not light but there is zapping on the killing grid	1. Lamp has failed 2. Lamp is not correctly positioned in lamp holders	Call our Service Department in Sydney 02 8811 3716, 9.00 am to 5.00 pm EST
There is intermittent or continuous zapping of the killing grid	1. The gap between the wire grids is too narrow 2. The killing grid is blocked.	1. Call our Service Department in Sydney on 02 8811 3716 2. Refer to Killing Grid Cleaning Section