

SPECIFICATION:

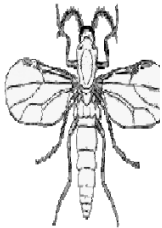
MODEL	YARD GUARD MOSQUITO TRAP YGMT 100
POWER	230V / 12 V / 25W
FAN SPEED	2,200 RPM
WEIGHT	2.3 kg
NET WEIGHT	2.0 kg
DIMENSIONS (mm)	250 x 250 x 350

MOSQUITOES:



Mosquitoes are blood sucking insects that are responsible for the transmission of many diseases. Within Australia there are more than 300 different species of mosquito. Several important human diseases are transmitted by these insects including Dengue fever, Australian encephalitis, Ross River virus disease and Barmah Forest virus disease. Mosquitoes also cause lifestyle problems, through their persistent biting spoiling recreational and social activities.

BITING MIDGES (SANDFLIES):



Biting midges or sand flies as they are called in Australia are small robust insects with piercing and sucking mouthparts. These small flies are renowned for their nuisance biting in coastal areas around lagoons, estuaries, mangrove swamps and tidal flats. The biting activity of adult is mainly limited to the periods of dawn and dusk; they will remain inactive through very windy weather, Female midges may attack humans in large numbers, biting on any areas of exposed skin, and often on the face, scalp and hands..

CODDLING MOTHS:



In Australia, there are over 10,000 species of moths. Most of the **Caterpillars** are the larvae of moths. The caterpillars feed at night and chew plants off at ground level. During the day, the caterpillars hide under clods of dirt or litter on the soil. **Army Worm** is a grass eating caterpillar that moves through the lawn like a raiding army and can reduce grass leaves to tattered shreds almost overnight. **Cutworms** are caterpillar pests that cause damage to crops and are a major problem for agricultural and horticultural industries of Australia

Copyright © The material used for the production of this owner's manual including text, graphics and layout are owned by The Kelly Company Pty Ltd and protected by copyright under the laws of Australia

Trade Mark ™ This product and packaging includes registered trademarks and trademark which are the subject of pending applications by The Kelly Company Pty Ltd and are protected by trade mark laws of Australia

OWNER'S MANUAL YARD GUARD™ MOSQUITO TRAP



**NEED WARRANTY OR SERVICE?
FREE CALL OUR CUSTOMER SERVICE
DEPARTMENT ON 1 800 677 981 BEFORE RETURNING THIS
PRODUCT TO RETAILER**

the
KELLY COMPANY

2 BONZ PLACE SEVEN HILLS SYDNEY NSW 2147 AUSTRALIA

IMPORTANT SAFETY INSTRUCTIONS:

Retain Instructions: The safety and operating instructions should be retained for future Reference.

Heed Warnings: All warnings on the appliance and in the operating instructions should be adhered to.

Water & Moisture: The appliance should not be used near water, for example over pond, bath tubs, kitchen sinks or above a swimming pool.

Do Not Modify: Do not modify, paint or change the unit in any way.

Young Children / Infirm Persons: This appliance is not intended for use by young children or infirm persons unless they have been adequately supervised by a responsible person to ensure that they can use the appliance safely.

Young Children: Young children should be supervised to ensure they do not play with the appliance.

Heat: The appliance should be situated away from heat sources such as radiators, stoves and other appliances that produce heat.

Power Source: The appliance should be powered only as described in these instructions or as marked on the appliance.

Cleaning: The appliance should be cleaned only as recommended in these instructions and in accordance with the water and moisture warning stated in this manual

Liquid Entry: Do not submerge in water

Object Entry: Do not place any object through any of the openings in the Mosquito Trap

Extension Cord: If required carry out a physical safety check of extension cord before use. Check for cuts or damage, kinks / twisting, exposed wires, damaged plugs (bent or loose pins). Avoid improper use of extension cords and keep them away from moisture.

Damage Requiring Service: The appliance should be serviced by a qualified Service Technician when:

- i. Heavy objects have fallen on the appliance
- ii. The appliance has been dropped or the body of the product has been damaged
- iii. The appliance does not appear to operate normally or exhibits a marked change in performance
- iv. Supply cord is damaged

Service: The user should not attempt to service the appliance beyond that described in these operating instructions. All other servicing should be referred to a qualified Service Technician; failure to do so will void the warranty.

WARRANTY:

Congratulations on purchasing the YARD GUARD® MOSQUITO TRAP YGMT 100, a quality appliance from The Kelly Company. Please read the following warranty information and complete the purchase date and retailer / supplier information as this will be needed when making a warranty claim.

Our goods come with guarantees that cannot be excluded under the Australian Consumer Law. You are entitled to a replacement or refund for a major failure and compensation for any other reasonably foreseeable loss or damage. You are also entitled to have the goods repaired or replaced if the goods fail to be of acceptable quality and the failure does not amount to a major failure. The product is warranted for 1 year from date of original purchase.

The provision of this warranty shall not apply to any product which has been subject to abuse and misuse, neglect or accident. Nor does the warranty apply to any product that has within the warranty period been used for a purpose for which the product has not been designed or which has been repaired or altered in such a way so as to adversely affect its performance and reliability. Service by an unauthorized source may void the warranty.

The Kelly Company Pty Ltd neither assumes nor authorizes any person to assume responsibility for damages due to accident, abuse, lack of responsible care, or the fixing of any unauthorized attachment or subjecting the product to any but 240V

Purchase Record: Immediately complete the following Proof of Purchase information and retain your cash register and credit card receipt as proof of purchase as this will be required when claiming under this warranty.

Date of Purchase:.....

Retailer / Supplier Name & Address:.....

Warranty Claim:

- i. Ensure that the YARD GUARD® MOSQUITO TRAP YGMT 100, is well packed to avoid transport damage as this is not covered under the Warranty. Also please include written details of the product failure, proof of purchase and your full name, address, telephone number and email address
- ii. The return freight / postage is to be paid by the purchaser
- iii. Send the product to our Service Department (details below)
- iv. We will acknowledge receipt of your claim within 24 hours of receipt and will advise repair or replacement lead time

Service Department
The Kelly Company Pty Ltd
2 Bonz Place Seven Hills Sydney NSW 2148
Telephone: 02 8811 3716 (9.00 am and 5.00 pm EST)
Email: service@kellycompany.com.au

MAINTENANCE (CONT):

REPLACING UV LAMP (TURN OFF POWER)



Using Phillips head screwdriver remove the 4 screws



Disconnect the fan/switch connector



Disconnect the UV lamp



Disconnect the 4 lamp holders (grasp and turn gently inwards) Snap off the tube holders and attach new lamp

TROUBLE SHOOTING:

Problem	Possible Reason (s)	Correction
UV Lamp does not light	Unit not plugged into live power point	Check if fan is working and if not check power point, lead and plug
	Lamp has burned out	Call for replacement
	Lamp is not seated correctly in lamp holders	Check seating refer to Lamp Service (above)
	Ballast may have failed	Call Service Department
Fan is not working	Unit not plugged into live power point	Check if Lamp is working and if not check power point, lead and plug
	Fan has failed	Call Service Department
Fan is making noise	Catch container is clogged or fan is clogged	See Maintenance section of this manual
Trap is operating but not catching mosquitoes	Incorrect positioning	Move to other locations for 1 week in each position Check Trap is no more than 40 to 60 cm from ground Check Trap is located in position with no wind, protected from direct sunlight and rain. Check Trap is located close to bushes, shrubs, ponds, garden beds
Trap is operating but not catching mosquitoes	Mosquito Attract Octenol Lure is exhausted	Replace Mosquito Attract AVAILABLE FROM THE STORE WHERE YOU PURCHASED THE MOSQUITO TRAP

WELCOME:

Thank you for purchasing the YARD GUARD® MOSQUITO TRAP model YGMT 100.

IN THE BOX

YARD GUARD® MOSQUITO TRAP model YGMT 100 • Low Voltage Transformer 230/12 Volt 25W, IP64 • Escape free collector • Mozzie Attract Octenol Lure • Hook • Owner's Manual

OWNER'S MANUAL:

This manual will provide you with directions for the safe and efficient operation of your YGMT 100 Please read the manual carefully and keep it in a safe place for future reference. Failure to operate the YGMT 100 in accordance with the instructions in this manual may cause damage to the unit.

HOW DOES IT WORK?

This YGMT 100 does not involve fogging, pesticides, repellents, citronella, coils or candles. These products do involve the use of dangerous chemicals known to be harmful to both humans and the environment.

The YARD GUARD® MOSQUITO TRAP uses a combination of Octenol, special spectrum UV light and heat that all are produced by humans or animals. The YGMT 100 uses the most environmental friendly methods in the market today and is safe for you and the environment.

Female biting insects require blood to nourish their eggs. They get that blood from you, your family, your pets and your friends. They track down hosts by sensing the carbon dioxide, Octenol moisture and heat from breath, body odors and color contrasts. The YARD GUARD MOSQUITO TRAP creates a combination of those cues. This tricks the insects into thinking the trap is a host. Once the pests are attracted to the exterminator, they are sucked into an enclosure by a powerful vacuum fan. Once trapped, they quickly dehydrate and die.

WHAT TO EXPECT:

While the YGMT100 will begin to catch immediately if there is any mosquito activity in the vicinity, it may take 6 to 8 weeks of use to reduce local populations to the point that breeding cycles are interrupted. You may choose to discontinue use of the trap at this point but subsequent re-infestations will occur after rain.

UV BLACK LIGHT LAMP:

The UV Black Light Lamp is long wave and therefore safe. The output / intensity of the lamp reduce with use. To maintain maximum attraction of flying insects replace every 24 months and preferably every 12 months. Replacement lamp **Cat No 71485**

OPERATION:

INSTALL THE MOZZIE ATTRACT™ CARTRIDGE

- i. Turn off the power
- ii. Open the Lure Compartment located on the top of the YGMT 100 by pressing it down and turning counter clockwise



IMPORTANT:

The **Mozzie Attract™** octenol cartridge **MUST be replaced every 30 days** during mosquito biting season to maintain optimum performance of the Mosquito Trap.

Mozzie Attract™ is available from the store where you purchased your Yard Guard Mosquito Trap

- iii. Remove the Mozzie Attract from its plastic pouch and place it into the Lure Compartment. Replace cap by pressing down and turning clockwise

POSITIONING OF THE YARD GUARD MOSQUITO TRAP

- i. First determine the source of the mosquito nuisance: Mosquitoes breed in wet areas such garden beds, ponds, trees / shrubs, wooded areas, streams, and marshland
- ii. Place the Trap between the mosquito sources and areas of human activity. As far away from people and as close to the mosquito source as possible. Attention: Do not place the trap close to people as it attracts, not repels mosquitoes.
- iii. Place the Trap in a location protected from rain and strong wind; if possible upwind of the mosquitoes.
- iv. Place the Trap in a predominantly shaded area. (It is very important to avoid direct sunlight) hang it close to the ground, not higher than 40 – 60 cm. The trap can be used indoors, but we then strongly recommend not using the Mozzie Attract for indoors as it will attract mosquitoes from the outside.

A = mosquito breeding area

B = wind direction

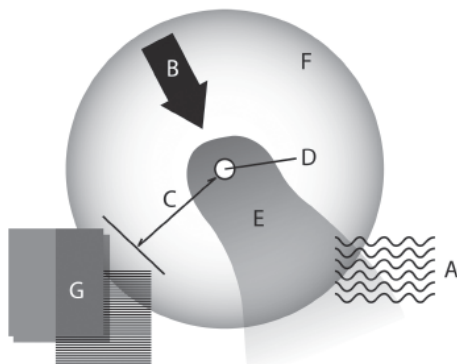
C = 10 m from Trap to human activity

D = position of Mosquito Trap

E = octenol Mozzie Attract lure range

F = UV light range 360°

G = house / patio / occupied area



MAINTENANCE:

⚠ WARNING:

- Disconnect the power cord when handling the trap
- Never submerge or expose the trap to water
- Do not use if cords, transformers and electric connectors are damaged
- Always position the trap away from wind, direct sunlight and rain
- Keep fingers away from the fan

CLEAN CATCH CONTAINER:

Empty the catch container when needed or at least once a week. The container will be found inside the trap.

- i. Turn off the power
- ii. Turn YGMT 100 so underside is facing upwards
- iii. Take hold of the catch container where it attaches to the Trap
- iv. Turn the catch container counter clockwise to release
- v. Empty the contents
- vi. The mesh net must be clean to maintain properly airflow.
- vii. Replace the catch container by turning clockwise
- viii. Turn on the power

IF FAN BECOMES CLOGGED:

- i. Turn off the power
- ii. Remove catch container, see instruction above.
- iii. Use a small brush and a small amount of soap water to clean the fan blades
- iv. Replace catch tray, see instructions above
- v. Turn on power

ATTACHING NET / CATCH CONTAINER:



Quick lock adapter, note position of the bayonet fittings



Attach catch net to quick lock adapter



Push quick lock adapter towards fan ring and turn clockwise