

IMPORTANT

**CONTAINS SEALED LEAD BATTERY
BATTERY MUST BE RECYCLED**

THIS APPLIANCE CONTAINS A RECHARGEABLE SEALED LEAD ACID BATTERY AND MUST NOT BE DISPOSED OF IN LAND FILL.

BATTERY REMOVAL & DISPOSAL INSTRUCTIONS:

1. TURN OFF THE MAINS SUPPLY POWER TO THE RECHARGER
2. DISCONNECT THE RECHARGER FROM THE APPLIANCE
3. TURN OFF POWER TO THE APPLIANCE BY PUSHING ON / OFF SWITCH TO OFF POSITION
4. REMOVE THE 6 SCREWS FROM THE REAR SECTION OF THE APPLIANCE TO EXPOSE THE BATTERY
5. CUT WIRES CONNECTED TO THE BATTERY
6. REMOVE BATTERY FROM APPLIANCE
7. CONTACT YOU LOCAL COUNCIL OR CONSULT THE YELLOW PAGE DIRECTORY FOR SCRAP METAL MERCHANTS OF RECYCLING SPECIALISTS AS THE BATTERY CONTAINED IN THIS APPLIANCE IS RECYCLABLE

Copyright © The material used for the production of this owners manual including text, graphics and layout are owned by The Kelly Company Pty Ltd and protected by copyright under the laws of Australia

Trade Mark ™ This product and packaging includes registered trade marks and trade marks which are the subject of pending applications by The Kelly Company Pty Ltd and are protected by trade mark laws of Australia

AFTER SALES SUPPORT:

Tel: 1800 677 982 or 02 8811 3716 ~ Email: sales@kellycompany.com.au

OWNER'S MANUAL

Home Guard

BUG ZAPPER

Model: SB975

..cordless, rechargeable battery operated..



AFTER SALES SUPPORT:

Tel: 1800 677 982 or 02 8811 3716

Email: sales@kellycompany.com.au

the KELLY COMPANY

20 Tucks Road Seven Hills Sydney
NSW Australia 2147

THIS PRODUCT IS NOT SUITABLE FOR PERMANENT OUTDOOR INSTALLATION

DO NOT ATTEMPT TO OPERATE THE HOME GUARD DIRECTLY FROM RECHARGER

Heed Warnings: All warnings on the appliance and in the operating instructions should be adhered to.

Water & Moisture: The appliance should not be used near water, for example over pond, bath tubs, kitchen sinks or above a swimming pool.

Do Not Modify: Do not modify, paint or change the unit in any way.

Young Children / Infirm Persons: This appliance is not intended for use by young children or infirm persons unless they have been adequately supervised by a responsible person to ensure that they can use the appliance safely. Young children should be supervised to ensure they do not play with the appliance.

Heat: The appliance should be situated away from heat sources such as radiators, stoves and other appliances that produce heat.

Power Source: The appliance should be powered only as described in these instructions or as marked on the appliance.

Cleaning: The appliance should be cleaned only as recommended in these instructions and in accordance with the water and moisture warning stated in this manual

Liquid Entry: Do not submerge the main body of the Home Guard in water (tray excepted)

Object Entry: Do not place any object through any of the openings in the Home Guard

Extension Cord: If required carry out a physical safety check of extension cord before use. Check for cuts or damage, kinks / twisting, exposed wires, damaged plugs (bent or loose pins). Avoid improper use of extension cords and keep them away from moisture.

Damage Requiring Service: The appliance should be serviced by a qualified Service Technician when:

- I. Heavy objects have fallen on the appliance
- II. The Home Guard has been dropped or the body has been damaged
- III. The Home Guard does not appear to operate normally or exhibits a marked change in performance
- IV. Supply cord to the recharger is damaged

Service: The user should not attempt to service the appliance beyond that described in these operating instructions. All other servicing should be referred to a qualified Service Technician. User should not attempt to open the back panel of the Home Guard as there are no user serviceable parts and any attempt to do so will void the warranty.

AFTER SALES SUPPORT:

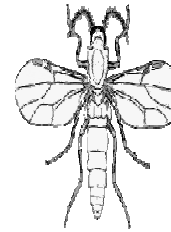
Tel: 1800 677 982 or 02 8811 3716 ~ Email: sales@kellycompany.com.au

MOSQUITOES:



Mosquitoes are blood sucking insects that are responsible for the transmission of many diseases. Within Australia there are more than 300 different species of mosquito. Several important human diseases are transmitted by these insects including Dengue fever, Australian encephalitis, Ross River virus disease and Barmah Forest virus disease. Mosquitoes also cause lifestyle problems, through their persistent biting spoiling recreational and social activities.

BITING MIDGES (SANDBLIES):



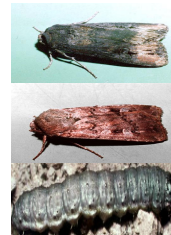
Biting midges or sandflies as they are called in Australia are small robust insects with piercing and sucking mouthparts. These small flies are renowned for their nuisance biting in coastal areas around lagoons, estuaries, mangrove swamps and tidal flats. The biting activity of adult is mainly limited to the periods of dawn and dusk; they will remain inactive through very windy weather, Female midges may attack humans in large numbers, biting on any areas of exposed skin, and often on the face, scalp and hands..

NON BITING FLII



Non-biting flies are often associated with domestic dwellings, especially throughout the warmer months when they bred prolifically, invading homes. Non-biting Australian flies contain many species that are responsible for contamination and spoilage of foodstuffs, annoyance, mechanical transmission of disease-causing pathogens, and invasion of living tissues (myiasis). Collectively known as "filth flies", they are distributed throughout the families of Calliphoridae (blow flies), Sarcophagidae (flesh flies) and Muscidae (house flies).

CODDLING MOTHS:



In Australia, there are over 10,000 species of moths. Most of the **Caterpillars** are the larvae of moths. The caterpillars feed at night and chew plants off at ground level. During the day, the caterpillars hide under clods of dirt or litter on the soil. **Army Worm** is a grass eating caterpillar that moves through the lawn like a raiding army and can reduce grass leaves to tattered shreds almost overnight. **Cutworms** are caterpillar pests that cause damage to crops and are a major problem for agricultural and horticultural industries of Australia

AFTER SALES SUPPORT:

Tel: 1800 677 982 or 02 8811 3716 ~ Email: sales@kellycompany.com.au

NOTES:
WELCOME:

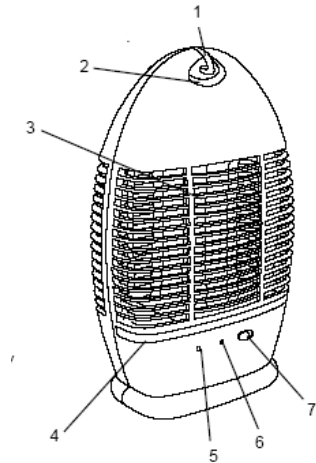
Thank you for purchasing the **Home Guard®** Model SB 975 Portable Bug Zapper. This manual will provide you with directions for the safe and efficient operation of your Home Guard. Please read this manual carefully and keep it for future use.

The Home Guard lures insects with its ultraviolet light emission and instantaneously terminates them upon contact. The model is designed for the insects to fall into the catch tray, in order to neatly and conveniently dispose of them.

Failure to operate the Home Guard in accordance with the instructions in this manual may cause damage to the unit and void the warranty.

Location of Controls:

1. Hanging Hook / Carry Handle
2. Strong Durable Plastic Body
3. Long Wave UV Light
4. Removable Bug Catch Tray
5. Indicator Light
6. Charging Port
7. Power ON/OFF Switch
8. Battery Recharger


Specification:

Ultraviolet Light	6 Watt:
Killing Grid	2200 Volts
Recharger	800 mA at 7.5 Volts

AS/NZS Accreditation:

Home Guard is Safety Tested and Approved AS/NZS 60335.1:2002 Annex B Appliances Powered by Rechargeable Batteries and AS/NZS 60335.1:2002 Clause 30: Resistance to heat fire and tracking. Resistance of non-metallic material to fire.

Charging Home Guard:

Although the Home Guard may come partially charged from the factory it is strongly recommended that you fully charge the battery before use. To charge the battery use the 7.5 volt AC/DC Recharger which is included with the Home Guard

1. Turn the ON/OFF switch to the OFF position
2. The Indicator Light will NOT illuminate therefore it is recommended that you monitor the time the unit is charging. For best results charge for 5-6 hours.
3. To check battery charge turn the ON/OFF switch to ON position and the indicator light will illuminate signalling battery charge status. **Important:** Do NOT attempt to charge the Home Guard in this mode.

Red Light = Low Battery | **Green Light = Charged Battery**

Using the AC-DC 7V Recharger:

Plug one end of the 7 V AC-DC Recharger into the Charging Port of the Home Guard. Plug the other end into any standard 240-volt wall outlet. To fully charge the battery leave the Recharger plugged in and on for approximately 5-6 hours. (Refer to the instructions on previous page for recharging the Bug Sentinel)

Operation:

The Ultraviolet Light in the Home Guard attracts flying insects and the electrified grid kills them.

Being completely portable you can place the Home Guard on a flat level surface such as a table top or use the Hanging Hook to hang it where convenient. Turn the unit ON by sliding the Power ON/OFF Switch to the ON (right) position and the LED Indicator will illuminate green. If the LED Indicator illuminates orange/red, then the battery needs to be recharged (see above and previous page).

Indoor Use:

Place the unit indoors to help get rid of any flying insects that have found their way inside the house or the area you wish to protect.

Outdoor Use:

Home Guard is not intended for permanent outdoor installation and use. **If it is taken outdoors it must be used in covered areas only and must not be exposed to rain, water or any moisture.**

Bug Tray Cleaning:

First make sure the unit is turned OFF. Simply remove the Bug Tray from the Home Guard by sliding it straight out. Empty the contents on the garden or in a garbage receptacle and replace the Bug Tray by sliding it back into the unit.

Killing Grid Cleaning:

Cleaning of the Killing Grid will extend product life and promote more efficient operation. First make sure the unit is turned OFF. Remove dead insects that may have lodged in the killing grid with a fine soft brush or blowing equipment. Be careful not to damage the grid.

WARNINGS:

1. **Do not expose Home Guard to moisture.**
2. **Do not use Home Guard outdoors when raining**
3. **Do not touch the killing grid while the unit is switched ON**
4. **Turn Home Guard OFF when charging.**
5. **Do not modify Home Guard or its Recharger in anyway**

AFTER SALES SUPPORT:

Tel: 1800 677 982 or 02 8811 3716 ~ Email: sales@kellycompany.com.au

Service:

Do not attempt to open the Home Guard® Model SB 975 as there are no consumer serviceable parts in this product and doing so will void the warranty.

The user must not attempt to service the unit beyond what is described in this Manual in the Bug Tray & Killing Grid Cleaning section. All other servicing including lamp replacement should be referred to a qualified service person or returned to The Kelly Company Pty Ltd at the address shown on the back page of this Manual.

Your Home Guard Portable Bug Killer including the Lamp is warranted for a period of 12 months from date of purchase. Refer to the Warranty on the back page of this Manual and record your proof of purchase information.

The return freight / postage costs for the return of the Home Guard Bug Zapper to The Kelly Company, during or outside of the warranty period, is to be paid by the purchaser. Goods being returned are to be prepaid by the purchaser and a non negotiable cheque or money order to the value of \$6.00 made out to The Kelly Company Pty Ltd is to be included with the returned goods for the return freight. Ensure that the Home Guard Bug Zapper is well packed to avoid transport damage; as such damage is not covered under the Warranty. Also include written details of the product failure.

Trouble Shooting

Problem	Possible Reason (s)	Correction
Home Guard Lamp does not light	The internal battery needs to be recharged	Refer to sections Charging Home Guard & Using AC-DC 7V Recharger
Home Guard is not zapping	The internal battery needs to be recharged	Refer to sections Charging Home Guard & Using AC-DC 7V Recharger
Home Guard is fully charged but is still not zapping.	The power to the killing grid may have failed	Holding the handle of an insulated (plastic handled) screwdriver place the tip onto the wire killing grid when the unit is turned on. If there is no zap call our Customer Service Department in Sydney on 02 8811 3716
Home Guard Lamp does not light but there is zapping on the killing grid	1. Lamp has failed 2. Lamp is not correctly positioned in lamp holders	Call our Service Department in Sydney 02 8811 3716, 9.00 am to 5.00 pm EST
There is intermittent or continuous zapping of the killing grid	1. The gap between the wire grids is too narrow 2. The killing grid is blocked.	1. Call our Service Department in Sydney on 02 8811 3716 2. Refer to Killing Grid Cleaning Section

AFTER SALES SUPPORT:

Tel: 1800 677 982 or 02 8811 3716 ~ Email: sales@kellycompany.com.au